

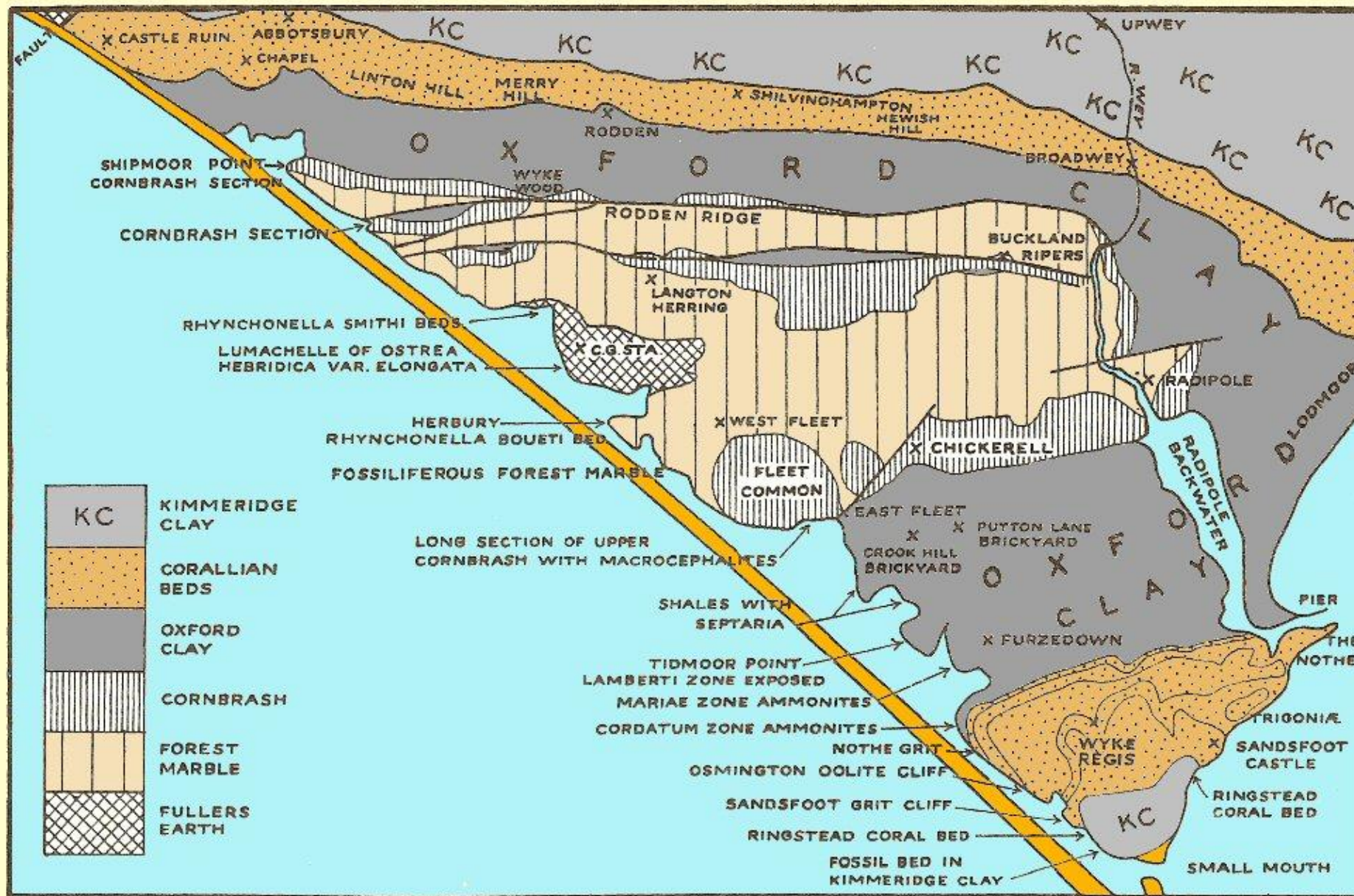
Geology of the Fleet

Alan Holiday

Dorset Geologists' Association Group



View across the
Weymouth anticline



Weymouth anticline
geology

Simplified geological map of the Fleet Lagoon area with annotations.

(modified after Arkell, 1947; see new BGS map West Fleet 341 etc for more detail and revisions) Ian West (c) 2005.



Oyster bed (lumachelle)
Ostrea hebridica at
Langton Hive Point



Close up of
oysterbed with
Ostrea hebridica



Brachiopods
Rhynchonella boueti
from Herbury



Forest marble
Example from
Moonfleet Beach



Trace fossil



Cornbrash
At Butterstreet Cove



Honeycomb weathering
at Butterstreet Cove



Ammonite
Kosmoceras from
the Oxford clay
north of Tidmoor
Point



Septarian nodule
Also known as
turtle stone or
Melbury marble



Ammonite
On the beach at
Tidmoor Point



Ammonites from Tidmoor Cove



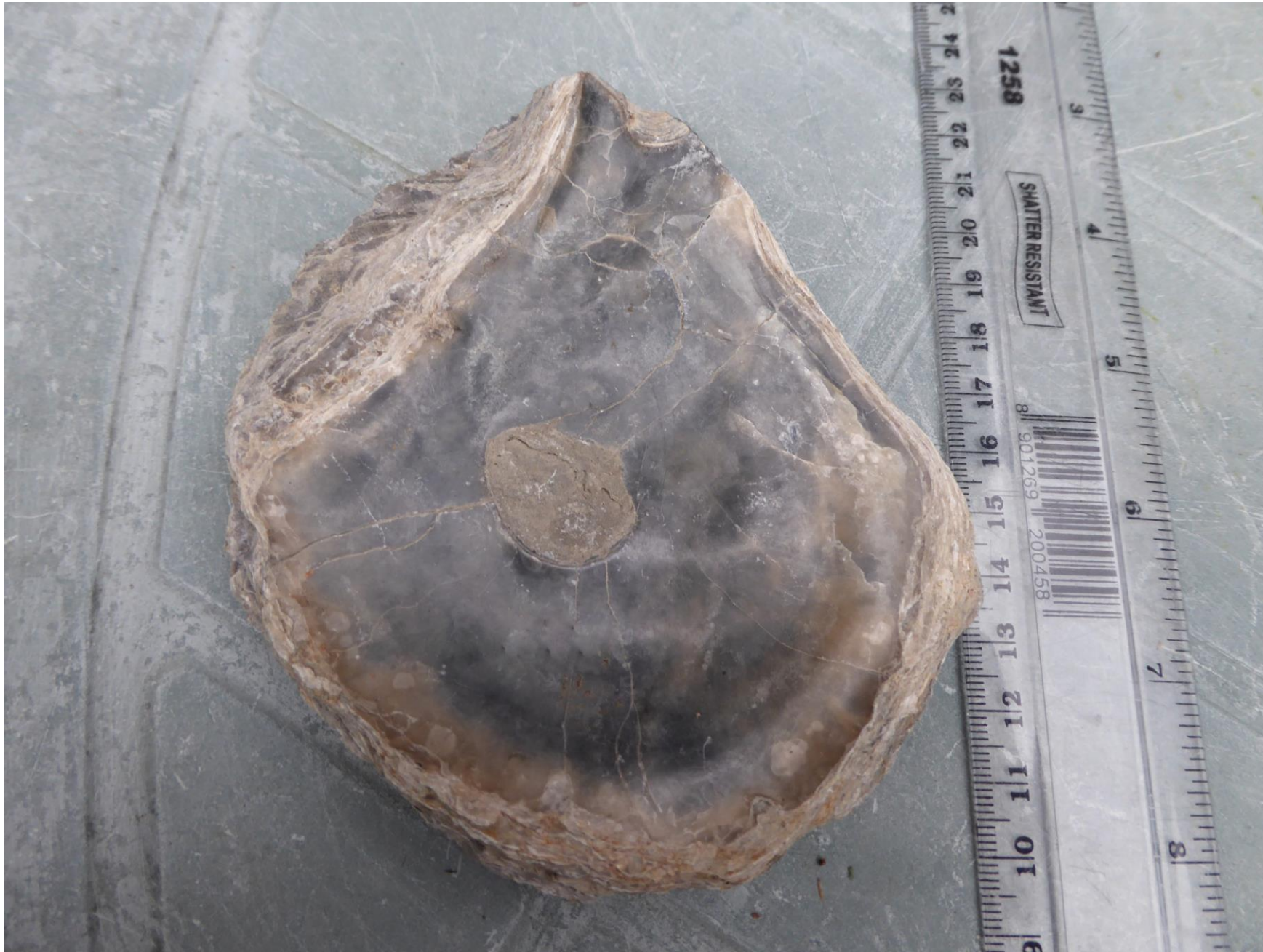
Osmington Oolite Limestone



The echinoid
Nuceolites
Scutatus from the
corallian near Camp
Road



Corallian limestone
near Camp Road with
cross bedding and
ripple marks



Ostrea delta
Bivalve from the
Kimmeridge clay



Kimmeridge clay
exposed in Chesil Cove



Portland limestone
chert beach pebble
with fossils and oolitic
feature
From Chesil Cove